

**ADVERTISEMENT FOR ENGINEERING AND RELATED SERVICES
AUGUST 25, 2025**

ADDENDUM NO. 1 AUGUST 28, 2025

CONTRACT NO. 4400033077

STATE PROJECT NO. H.015641.5

FEDERAL AID PROJECT NO. H015641

US 165: SUPERSTREET, DELOACH ST – WHITE ST

ROUTE: US 165

OUACHITA PARISH

DBE GOAL = 4%

Under the authority granted by Title 48 of Louisiana Revised Statutes, the Louisiana Department of Transportation and Development (DOTD) hereby issues this advertisement for consulting firms to provide engineering and related services. **Consultants who are a Louisiana or foreign LLC or corporation should be appropriately registered with the [Louisiana Secretary of State](#), as contemplated by Title 12 of the Louisiana Revised Statutes, and with the [Louisiana Professional Engineering and Land Surveying \(LAPELS\)](#) Board under its rules for firms. If a consultant is not in good standing in accordance with those provisions, it may be subject to consequences contemplated in Title 12 and/or the LAPELS rules. All requirements of LAPELS must be met at the time the proposal is submitted. Prime consultants must be registered with the Louisiana Secretary of State and the Federal Government, using [SAM.gov](#), prior to contract execution.**

One (1) proposal will be selected for the contract solicited per this advertisement. Only one (1) DOTD Form 24-102 proposal is required for this advertisement, and it represents the prime consultant's qualifications and those of any and all sub-consultants proposed to be used for the referenced contract(s). All identifying contract number(s) should be listed in Section 2 of the DOTD Form 24-102. **USE THE DOTD FORM 24-102 PROVIDED WITH THE ADVERTISEMENT.**

DOTD Contract Manager (CM) – Mohammad Nur

Any questions concerning this advertisement must be sent in writing to DOTDConsultantAds80@la.gov no less than 48 hours (excluding weekends and holidays) prior to the proposal deadline.

SCOPE OF SERVICES

The general tasks to be performed by the Consultant for this contract are described more specifically in Attachment A, which is incorporated herein by reference.

The Consultant shall perform the work in accordance with the requirements of this advertisement and the resulting contract. Deliverables shall be in such format as required in Attachment A. The work performed by the Consultant shall be performed in a manner consistent with that degree of

care and skill ordinarily exercised by members of the same profession currently practicing under similar circumstances.

MINIMUM PERSONNEL REQUIREMENTS (MPRs)

The requirements set forth in Attachment B must be met at the time the proposal is submitted.

EVALUATION CRITERIA

The criteria to be used by DOTD in evaluating responses for the selection of a consultant to perform these services are listed below:

1. **team** size as related to the project magnitude, weighting factor of three (3);
2. staff experience on similar projects, weighting factor of four (4);
3. firm experience on similar projects, weighting factor of three (3);
4. approach and methodology, weighting factor of nine (9);
5. current work load with DOTD, weighting factor of five (5); and
6. past performance on similar DOTD projects, weighting factor of six (6)*

*The Consultant is to identify in the table below those disciplines consistent with the approach and methodology proposed in Section 18 of the DOTD Form 24-102.

THE FOLLOWING TABLE MUST BE COMPLETED AND INCLUDED IN SECTION 12 OF THE DOTD FORM 24-102 PROPOSAL.

Sub-consultants are allowed to be used for this proposal. Fill in the table by identifying only those disciplines consistent with the approach and methodology proposed in Section 18 of the DOTD Form 24-102*, the name of each firm that is part of the proposal, and the percentage of work in each discipline to be performed by that firm. The percentage estimated for each discipline is for evaluation purposes only and will not control the actual performance or payment of the work. The percentages for the prime and sub-consultants must total 100% for each discipline, as well as the overall total percent of the contract. (Add rows and columns as needed)							
Discipline(s)	% of Overall Contract	Prime	Firm B	Firm C	Firm D	Firm E	Each Discipline must total to 100%
							100%
							100%
							100%
Identify the percentage of work for the overall contract to be performed by the prime consultant and each sub-consultant.							
Percent of Contract	100%						-----

*The disciplines are: Appraiser, Bridge, CE&I/OV, CPM, Data Collection, Environmental, Geotech, ITS, Other (must specify), Planning, Right-of-Way, Road, Survey, and Traffic.

If sub-consultants are used, the prime consultant must perform greater than 50% of the work for the overall contract.

Proposals will be evaluated as set forth in the “Evaluation Criteria” section of this advertisement. The evaluation will be by means of a point-based rating system. Each of the above criteria will receive a rating on a scale of one (1) through five (5). The rating will then be multiplied by the corresponding weighting factor. The rating in each category will then be added to arrive at the proposal’s final rating.

DOTD’s Project Evaluation Team (PET) will be responsible for performing the above described evaluation, and will present a shortlist of the three (3) (if three are qualified), highest rated consultants to the Secretary of DOTD. The Secretary will make the final selection.

COMPLIANCE WITH SUPPLEMENTAL ETHICS REQUIREMENTS

DOTD has established supplemental ethics requirements applicable to consultants and PET members. These requirements are found in the “Supplemental Ethics Requirements” article of the sample contract linked to this advertisement under Contract Execution Requirements, which are incorporated herein by reference. Any firm that is found to have violated these requirements may not be considered for this selection.

By submission of a proposal to perform services pursuant to this advertisement, the Consultant agrees to comply with DOTD’s Supplemental Ethics Requirements.

RULES OF CONTACT UPON ADVERTISEMENT

DOTD is the single source of information regarding the contract selection. Any official correspondence will be in writing, and any official information regarding the contract will be disseminated by DOTD’s designated representative via the DOTD website. The following rules of contact will apply during the contract selection process, commencing on the advertisement posting date and ceasing at the time of final contract selection. Contact includes face-to-face communication, the use of a telephone, facsimile, electronic mail (email), or formal or informal written communications with DOTD. Any contact determined to be improper, at the sole discretion of DOTD, may result in the rejection of the proposal (i.e., DOTD Form 24-102).

Consultants and consultant organizations **shall correspond with DOTD regarding this advertisement only through the email address designated herein; DOTDConsultantAds80@la.gov** and during DOTD sponsored one-on-one meetings.

No consultant, or any other party on behalf of a consultant, shall contact any DOTD employee, other than as specified herein. This prohibition includes, but is not limited to, the contacting of: department, office, or section heads, project managers, members of the evaluation teams, and any official who may participate in the decision to award the contract resulting from this advertisement.

DOTD will not be responsible for any information or exchange that occurs outside the official process specified above.

By submission of a proposal to perform services pursuant to this advertisement, the Consultant agrees to the communication protocol herein.

PROJECT TIME

The overall time for the completion of the scope of services is estimated to be **4 years**.

NEGOTIATED COMPENSATION (September 2024)

The compensation payable to the Consultant for all services rendered in connection with this contract is estimated at **\$1,410,559**. This estimate will be used for grading purposes only. Actual compensation will be determined by DOTD based on work hours negotiated between DOTD and the selected consultant. Within fifteen (15) calendar days of notification of selection, a kick-off meeting will be held with the selected consultant and appropriate DOTD personnel. The selected consultant will be required to submit a work hour proposal within thirty (30) calendar days following the notification of selection. The negotiation period shall not exceed ninety (90) calendar days from the selection notification date. If an agreement cannot be reached with the selected consultant within that time, negotiations may be terminated and another consultant selection made from the shortlist.

Payment will be made based on lump sum compensation.

DIRECT EXPENSES

To the extent that the Consultant is allowed to claim reimbursement for direct expenses, all direct expense items that are not paid for in the firm's indirect cost rate, and are, needed and will be consumed during the life of the contract must be identified by the Consultant during contract development. The acquisition or rental of standard equipment or resources to be used in the provision of services rendered for this contract will not be considered for payment under direct expenses (e.g., vehicles for construction engineering and inspection (CE&I) inspectors).

The Consultant should own most of the equipment required to provide the work and services. The cost of this equipment should be included in the Consultant's indirect cost rate. Equipment may be considered "specialized" if it cannot be considered standard equipment for that particular consultant's normal operating business needs. If a consultant believes special equipment is needed for the contract, the Consultant must inquire through the Question and Answer process, as provided herein, whether the identified item will be considered specialized equipment for the individual contract.

All travel related expenses will be compensated under direct expenses, and will be in accordance with the most current Louisiana Office of State Travel regulations as promulgated in the Louisiana Administrative Code under the caption "PPM No. 49", with the exception that compensation for vehicle usage will be based on actual miles traveled directly and exclusively related to project needs. Vehicle rental rates will require prior approval from the PM.

CYBERSECURITY TRAINING

In accordance with La. R.S. 42:1267(B)(3) and the State of Louisiana's Information Security Policy, if the Consultant, any of its employees, agents, or sub-consultants will have access to State government information technology assets, the Consultant's employees, agents, or sub-consultants with such access must complete cybersecurity training annually, and the Consultant must present evidence of such compliance annually and upon request. The Consultant may use the cybersecurity training course offered by the Louisiana Department of State Civil Service without additional cost or may use any alternate course approved in writing by the Office of Technology Services.

For purposes of this Section, "access to State government information technology assets," means the possession of credentials, equipment, or authorization to access the internal workings of State information technology systems or networks. Examples would include but not be limited to State-issued laptops, VPN credentials to credentials to access the State network, badging to access the State's telecommunications closets or systems, or permissions to maintain or modify IT systems used by the State. Final determination of scope inclusions or exclusions relative to access to State government information technology assets will be made by the Office of Technology Services.

QUALITY ASSURANCE/QUALITY CONTROL

DOTD requires the selected consultant and all sub-consultants to develop a Quality Assurance/Quality Control (QA/QC) program in order to provide a mechanism by which all deliverables will be subject to a systematic and consistent review. The selected consultant shall address in its plan the review of all sub-consultant work and deliverables. **Only the selected consultant must submit their QA/QC plan to the DOTD PM within 10 business days of the award notification to the Consultant (do not include QA/QC plan in the DOTD Form 24-102).** Consultants must ensure quality and adhere to established DOTD policies, procedures, standards and guidelines in the preparation and review of all deliverables. DOTD may provide limited input and technical assistance to the Consultant. Any deliverables to be transmitted by the Consultant shall be transmitted with a DOTD Quality Assurance/Quality Control Checklist, and a certification that the deliverables meet DOTD's quality standards.

If Attachment A includes specific QA/QC requirements that contradict those set forth above, the requirements in Attachment A control.

TRAFFIC ENGINEERING PROCESS AND REPORT TRAINING REQUIREMENTS

As part of DOTD's on-going commitment to high quality traffic engineering reports, a traffic engineering training course must be taken by traffic engineering PEs and EIs in order to be eligible to work on DOTD projects. When traffic is included as a discipline on which past performance is evaluated, for consultants performing traffic engineering services (i.e., traffic analysis throughout all DOTD project stages and/or QC of traffic analysis), appropriate personnel must successfully complete the three (3) modules of the Traffic Engineering Process and Report Course offered by Louisiana Transportation Research Center (LTRC). This Course must be completed no later than the time the proposal is submitted or show proof of registration for the Course from the LTRC's Registration site. **Copies of training certificates or proof of registration are to be included in**

Section 20 of the proposal.” It will be the prime consultant’s responsibility to ensure their staff and sub-consultants complete the training. Copies of training records may be obtained from the LTRC website <https://registration.ltrc.lsu.edu/login>.

WORK ZONE TRAINING REQUIREMENTS

As part of DOTD’s on-going commitment to work zone safety, required work zone training courses must now be taken every four (4) years in order for personnel to remain eligible to work on DOTD projects. For consultants performing preconstruction services (*e.g.*, design, survey, subsurface utility, geotechnical, traffic, bridge inspection, environmental services), appropriate personnel must successfully complete these courses. In general, the person in responsible charge of traffic control plans shall be required to have Traffic Control Supervisor training. For preconstruction field services performed within the clear zone, at least one (1) member of the field crew shall have Traffic Control Supervisor or Traffic Control Technician training. The Consultant should identify all personnel listed in the staffing plan (Section 14) for the contract who have completed the appropriate work zone training courses. All preconstruction work zone training requirements shall be met **prior to contract execution**. It will be the prime consultant’s responsibility to ensure their staff and sub-consultants have the appropriate work zone training.

In addition to the above requirements, if the Scope of Services set forth in Attachment A includes Construction Engineering and Inspection (CE&I), the following training requirements shall be met **at the time the proposal is submitted and are to be included in Section 20 of the proposal**:

Field Engineers:	Traffic Control Technician Traffic Control Supervisor Flagger
Field Engineer Interns:	Traffic Control Technician Traffic Control Supervisor Flagger
Field Senior Technicians, Survey Party Chiefs, and SUE Worksite Traffic Supervisors*:	Traffic Control Technician Traffic Control Supervisor Flagger
Other Field Personnel*:	Traffic Control Technician Flagger

* excluding Asphalt Plant Inspector, Paint Managers, and Paint Inspectors

Approved courses are offered by ATSSA and AGC. Substitutes for these courses must be approved by the DOTD Work Zone Task Force. For more information, please contact DOTD HQ Construction at 225-379-1584. Specific training course requirements are:

Flagger:	Successful completion every four (4) years of a work zone flagger course approved by the Department. The “DOTD Maintenance Basic Flagging Procedures
----------	--

Workshop” is not an acceptable substitute for the ATSSA and AGC flagging courses.

Traffic Control Technician (TCT): Successful completion every four (4) years of a work zone traffic control technician course approved by the Department. **After initial successful completion, it is not necessary to retake this course every four (4) years if Traffic Control Supervisor training is completed every four (4) years.**

Traffic Control Supervisor (TCS): Successful completion of a work zone traffic control supervisor course approved by the Department. Following an initial completion, traffic control supervisors must either complete a one (1)-day TCS refresher course or retake the original two (2)-day TCS course every four (4) years.

ATSSA contact information: (877) 642-4637

*****ALL WORK ZONE TRAINING CERTIFICATIONS MUST BE ACTIVE*****

REFERENCES

All services and documents will meet the standard requirements as to format and content of DOTD and will be prepared in accordance with the latest applicable editions, supplements, and revisions of the following:

1. [AASHTO Standards – The American Association of State Highway Transportation Officials](#)
2. [AASHTO Highway Safety Manual](#)
3. [AASHTO – A Policy on Geometric Design of Highways and Streets](#)
4. [ASTM Standards](#)
5. [CyberSecurity Training](#)
6. [DOTD – Bridge Design and Evaluation Manual \(BDEM\)](#)
7. [DOTD – Complete Streets](#)
8. [DOTD – Construction Contract Administration Manual](#)
9. [DOTD – Consultant Contract Services Manual](#)
10. [DOTD – Hydraulics Manual](#)
11. [DOTD – Location and Survey Manual – REVISED OCTOBER 2023](#)
12. [DOTD – Addendum “A” to the Location & Survey Manual](#)
13. [DOTD – Louisiana Standard Specifications for Roads and Bridges](#)
14. [DOTD – Materials Sampling Manual](#)
15. [DOTD – Minimum Design Guidelines](#)
16. [DOTD – Off-System Highway Bridge Program Guidelines](#)
17. [DOTD – Pavement PRR Min Design Guidelines](#)
18. [DOTD – Roadway Design Procedures and Details Manual](#)

19. [DOTD – Stage 1 Planning/Environmental Manual of Standard Practice](#)
20. [DOTD – Testing Procedures Manual](#)
21. [DOTD – Traffic Engineering Manual](#)
22. [DOTD – Traffic Engineering Process and Report](#)
23. [DOTD – Traffic Signal Manual](#)
24. [e-CFR – Electronic Code of Federal Regulations \(all applicable\)](#)
25. [FHWA – Bridge Inspector’s Reference Manual \(BIRM\)](#)
26. [FHWA – Manual on Uniform Traffic Control Devices for Streets and Highways \(MUTCD\)](#)
27. [National Electrical Safety Code \(NESC\)](#)
28. [LTRC – Local Public Agency Qualification Program: Construction, Engineering and Inspection course](#)
29. [NFPA 70 – National Electrical Code \(NEC\)](#)
30. [NEPA – National Environmental Policy Act](#)

CONTRACT EXECUTION REQUIREMENTS

The selected consultant will be required to execute the contract within ten (10) days after receipt of the contract.

A sample of the contract provisions can be found at the following link:
https://bit.ly/CCS_SampleContractProvisions.

DISADVANTAGED BUSINESS ENTERPRISE REQUIREMENT

This advertised contract has a Disadvantaged Business Enterprise (DBE) goal of **4%** of the contract fee. Credit for DBE participation will be limited to the firms certified pursuant to the Louisiana Unified Certification Program. For convenience, DOTD provides a list on its website (<http://www8.dotd.la.gov/UCP/UCPSearch.aspx>) of firms that have been certified as eligible to participate as DBEs on US DOT assisted contracts. This list is not an endorsement of the quality of performance of any firm but is simply an acknowledgment of the listed firms’ eligibility as a DBE. DOTD makes no representations of the accuracy or completeness of this list on any particular date or time. Prime consultants considering the use of a particular DBE sub-consultant are advised to obtain documentation of certification status from that sub-consultant prior to submission of DOTD Form 24-102.

Prime consultants must specify by firm name in Section 11 on the DOTD Form 24-102 all DBE firms which the prime intends will participate in providing services under the contract to meet the DBE goal and indicate for each the percent of the contract fee for the services that will be performed by each specified DBE firm. If the prime did not succeed in obtaining enough DBE participation to meet the goal, it must attach to the DOTD Form 24-102, behind Section 23, documentation of its good faith efforts to meet the goal.

REVISIONS TO THE ADVERTISEMENT

DOTD reserves the right to revise any part of the advertisement by issuing addenda to the advertisement at any time. Issuance of this advertisement in no way constitutes a commitment by DOTD to award a contract. DOTD reserves the right to accept or reject, in whole or part, all DOTD Form 24-102s submitted, and/or cancel this consultant services procurement if it is determined to be in DOTD's best interest. All materials submitted in response to this advertisement become the property of DOTD, and selection or rejection of a proposal does not affect this right. DOTD also reserves the right, at its sole discretion, to waive administrative informalities contained in the advertisement.

CLARIFICATIONS

DOTD reserves the right to request clarification of ambiguities or apparent inconsistencies found within any proposal, if it is determined to be in DOTD's best interest.

PROPOSAL REQUIREMENTS

The Consultant's proposal for this advertisement must be submitted by email to DOTDConsultantAds80@la.gov. **USE THE DOTD FORM 24-102 PROVIDED WITH THE ADVERTISEMENT.** Hard copies of the Consultant's proposal are not required. All proposals must be in accordance with the requirements of this advertisement, and the Consultant Contract Services Manual. Unless otherwise stated in this advertisement, copies of licenses and certificates are not required to be submitted with the proposal.

If more than one (1) contract is to be selected based on this advertisement, no prime consultant is allowed to be a sub-consultant on any other consultant's 24-102. If a prime consultant is submitted as a sub-consultant on another consultant's 24-102, its proposal as a prime consultant may be deemed non-responsive.

ANY CONSULTANT FAILING TO SUBMIT ANY OF THE INFORMATION REQUIRED ON THE DOTD FORM 24-102, OR PROVIDING INACCURATE INFORMATION ON THE DOTD FORM 24-102, MAY BE CONSIDERED NON-RESPONSIVE.

DOTD employees may not submit a proposal, nor be included as part of a consultant's proposal.

Contract and/or part-time employees are allowed. Such employees should be shown in Section 14 of the DOTD Form 24-102 with an asterisk denoting their employment status.

The DOTD Form 24-102 **PDF file shall be labeled** "CONTRACT NO. 4400033077 Consultant's name", and **must be received no later than 3:00 p.m. Central Time by** DOTDConsultantAds80@la.gov via email on Tuesday, September 23, 2025.

The PDF file must be attached in the email or as a hyperlink in the email or as an email through third-party file transfer websites such as Dropbox or WeTransfer.

CONTRACT NO. 4400033077

Please note that delivery failure may occur on email files exceeding 25MB uncompressed. In addition, all emails are scanned for cybersecurity threats prior to delivery to DOTDConsultantAds80@la.gov; **therefore, allow sufficient time** for this process to take place when submitting your proposal.

ATTACHMENT A – SCOPE OF SERVICES

The project time is critical.

The home office indirect cost rate shall be applicable to all services except as otherwise designated hereafter.

The Consultant will provide engineering and related services for the design and development of construction plans for roadway intersection improvements, signal improvement and pedestrian improvements on US 165 and US 165 Service Roads from south of Deloache Street to White Street. The interchange at I-20 and US 165 is excluded from the project limit. The improvements include adding J-turns with bulb-outs, adding turn lanes, extending existing turn lanes, converting existing intersections to R-Cut intersections, reconfiguring existing intersections to improve pedestrian mobility, removing full access medians, installing high friction surface treatments, adding pedestrian cross walks, and adding pedestrian and bike facilities to Service Roads. The improvements also include developments of traffic signal timings at the intersections and modifying the existing lighting system within the project limit.

A draft exhibit of the layout of the project is included in the scope of services. The services to be performed by the Consultant are described more specifically as follows:

TASK 1: PROJECT MANAGEMENT SERVICES

The Consultant shall schedule a kick-off meeting with the Project Manager and project team according to the Schedule of Deliverables. The Consultant is responsible for setting up the project kick-off meeting. Agenda items for this meeting shall include the review points and durations, time-frame assumptions built into the project schedules, invoicing procedures, progress reporting, and rating criteria. The Consultant is responsible for meeting minutes, which shall be provided to the Project Manager within three (3) business days following the meeting.

The Consultant is responsible for project tracking and will ensure all tasks are completed on schedule. All correspondence shall include applicable state project numbers, along with the project names, route number, parish, and federal aid project numbers. The Consultant shall provide the Project Manager with a monthly project schedule (in Microsoft Project) and progress report including the estimated and actual date of completion of each task to be performed. The Consultant shall coordinate with and provide the Project Manager with monthly updates. It is anticipated that the Consultant will have periodic coordination meetings with the Project Manager and other subject matter experts during the course of the project to review the project status and address any concerns.

Deliverables: Submittal of monthly project schedule, progress report and invoices, meeting minutes.

TASK 2: ROAD DESIGN SERVICES

The design and plan development shall consist of all engineering services required for the completion of preliminary and final plans, cost estimates and supporting documents for the project.

1. The Consultant shall assemble and study existing site data including but not limited to: as-built plans, improvement studies, traffic data, and the topographic survey.
2. The Consultant shall submit 30% Preliminary plans with design report, 60% Preliminary Plans, 90% Preliminary Plans (Plan-in-Hand), 100% Preliminary Plans, 60% Final Plans, 95% (ACP) Final Plans and sealed Final Plans. Deliverables shall be submitted to the DOTD Project Manager for distribution through the utilization of ProjectWise or as directed by the DOTD Project Manager. The Consultant shall include a cost estimate with major submittals.
3. Input of estimated quantities into AASHTOWare Project Estimation with their unit prices and updates for each submittal.
4. Design of plans in English units of measurement.
5. All plans submitted by the Consultant shall conform to the quality standards adopted by DOTD. DOTD may reject any plans not conforming to these standards.
6. The Consultant shall submit all necessary reports, exceptions, waivers and other supporting documents at the required plan development stages.
7. The Consultant shall prepare all necessary special specifications, specialty item descriptions, and details for the project.
8. The Consultant shall provide a utility conflict matrix.
9. The Consultant shall provide a written disposition to all review comments to the DOTD Project Manager with or prior to the subsequent submittal.
10. The Consultant shall participate in project meetings such as public meetings, kick-off, preliminary plan review, joint plan review and final plan review.
11. The Consultant shall provide layouts, exhibits and permit sketches for DOTD's use in obtaining environmental clearance, obtaining permits and if necessary, displaying at public meetings.
12. The Consultant shall provide assistance answering pre-bid questions submitted to DOTD.
13. The Consultant shall perform a review of the Contractor's Bid, and provide DOTD with a recommendation to award or reject the Bid.

The Consultant cannot proceed to final plan development until environmental has been cleared.

The Consultant shall provide preliminary and final roadway plans and supporting documents for the project including, but not limited to the following:

- Title Sheet, Layout Map and Index to Sheets
- Typical Sections and Details

- Quantity Summary Tables
- Summary of Estimated Quantities
- Plan and Profile Sheets ((1"=20' plan/profile sheets with subsurface drainage and/or open ditch drainage as required)
- Drainage Plan and profile Sheet (1:20 scale, as necessary)
- Survey Control
- Existing Drainage Maps
- Design Drainage Maps
- Summary of Drainage Structures
- Geometric Layout and Geometric Detail Sheets
- Joint Layout and Graphical Grade Sheets (as necessary)
- Permanent Sign and Pavement Marking Layout Sheet
- Misc. Details & General Notes
- Temporary Construction Sign and Suggested Sequence of Construction
- Cross Sections
- Construction Cost Estimates
- Hydraulic Report
- Design Report
- Design Exceptions and Design Waivers
- Storm Water Pollution Prevention Plan
- Constructability/Biddability Review Form
- QA/QC Checklist
- Engineering Reason and Decision Document (as necessary)
- Estimated Contract Time
- Transportation Management Plan (TMP) (Level 2 anticipated)

TASK 3: TRAFFIC DESIGN SERVICES

The Consultant shall provide engineering and related services to develop traffic signal timings and traffic signal design plans on US 165 in Ouachita Parish per the approved study. Timings and plans will be developed for the intersections listed below. The traffic signal design may include but is not limited to signalized J-turns, signal removal, full signal upgrades, and pedestrian signal equipment. A 2017 Traffic Report as well as recent supplemental traffic study within the project limit, including traffic count data along the corridor, is available from the Department. As there have been no significant changes since then, the Consultant shall use this data to develop signal timing plans. This scope shall include but is not limited to creation of traffic signal inventory (TSI) and traffic signal plans based off the proposed timings and data from the study, per the DOTD Traffic Signal Manual. The design shall follow the Manual on Uniform Traffic Control Devices (MUTCD), the DOTD Traffic Signal Manual, and DOTD policies.

Locations	Type of Work
Renwick St at US 165	Signal Installation
Louberta St at US 165	Signal Installation
Louberta St Northbound U-Turn	Signal Installation
Louberta St Southbound U-Turn	Signal Installation

Century Blvd at US 165	Signal Installation
East St at US 165	Signal Installation
Ruffin Dr at US 165	Signal Installation
Hadley St at US 165	Signal Removal
LA 15 at US 165	Signal Installation
Pearl Street at US 165	Signal Installation

TASK 4: ELECTRICAL DESIGN SERVICES

The Consultant shall provide design services for, but not limited to, the following:

Plans, technical special provisions (TSP), construction estimate, illumination analysis, and engineering calculations services to modify the existing roadway lighting systems along US 165 within the project limits. The Consultant shall provide plans deliverables as defined in III.B below:

I. PROJECT MANAGEMENT

A. Meetings / Site Inspections:

1. At a minimum, the Consultant shall hold meetings shown in Table 1. The Consultant shall also attend meetings as requested by the DOTD Project Manager when needed for a specific issue during the design phase of the project. The Consultant shall prepare the minutes of all meetings for review by the attendees.
2. Design Phase:
 - a. After the kick-off meeting, the Consultant shall meet with the DOTD District personnel, Parish/Local Government, and utility companies at the initial site inspection to locate any existing equipment, investigate the existing field conditions, and to discuss preferences of design and/or equipment regarding simplifying maintenance of the proposed lighting system.
 - b. The Consultant shall perform a minimum of two (2) site inspections during design, which includes the initial and 60% PIH inspections.
 - c. The Consultant shall be responsible for researching and obtaining as-built or other data from DOTD as needed for their design.

B. Written Plan / Monthly Reports:

A written plan describing the work to be performed and a timeline to perform the work shall be provided by the Consultant through design phase. Monthly reports shall consist of more details than man-hour invoices and give a verbal assessment of progress and prompt notification of any problems that may require the DOTD Project Manager's attention.

C. Project Responsibility and Ownership:

The Consultant shall be proactive as well as reactive during all phases of the project, including tracking/monitoring of progress and coordination/communication with DOTD, Parish/Local Government, and utility companies, for avoidance or resolution of issues.

Coordination also includes identification of and interaction with all other ongoing projects (feasibility through construction) that interface or interfere with this project.

D. Coordination with Existing Projects:

The Consultant shall investigate as-built plans and other documentation related to the existing lighting system and coordinate the new system with existing systems in the surrounding area.

II. PLAN STANDARDS

The Consultant shall develop a complete set of construction plans and estimate in accordance with the following:

- A. The Consultant shall provide electrical lighting plans showing the locations of existing equipment (if applicable), removal of the existing equipment (if applicable), and the proposed location of the new equipment. Plans shall include, but not be limited, to the following: service points, lighting controllers/panels, safety switches, receptacles, above or below ground pull and/or junction boxes, conduit, wiring, jacked/bored casing, and luminaires. All new equipment and design must conform to latest editions of the following:
 - 1. LA DOTD Illumination & Electrical Standards
 - 2. LA DOTD "A Guide to Constructing, Operating, and Maintaining Highway Lighting Systems"
 - 3. Illuminating Engineering Society (IES) Standards
 - 4. LA DOTD Electrical Plan Layout and Presentation
 - 5. 2016 Louisiana Standard Specifications for Roads and Bridges
 - 6. National Electrical Code (NFPA 70)
 - 7. Bridge Design and Evaluation Manual
 - 8. Bridge Design Technical Memoranda
 - 9. Standard for Electrical Safety in the Workplace (NFPA 70E)
 - 10. AASHTO Design Guides
 - 11. All other local and applicable codes
- B. The plan sheets shall be CADconformed at all stages of development and contain the CADconform emblem.
- C. Project presentation on the plans shall strictly adhere to the DOTD Electrical Design format.
- D. The Consultant shall provide plans that include all existing utilities within the project limits clearly documented. The Consultant shall work with the DOTD District Utility Representative to ensure that completed design minimizes impacts to existing utilities.
- E. The Consultant shall develop an itemized construction estimate. The estimate shall be broken down by control sections and individual pay items as defined in the *Louisiana Standard Specifications for Roads and Bridges*, and AASHTOWare Project

Preconstruction, or as directed.

- F. The Consultant shall submit a request to the DOTD Project Manager to obtain any DOTD standard plans that the Consultant determines are needed by the project.
- G. The Consultant shall submit a request to the DOTD Project Manager to obtain copies of any CADD details. CADD details provided by DOTD are for informational purposes only. The Consultant is responsible for development and ownership of all details to meet project criteria.
- H. The Consultant shall prepare a preliminary Short Circuit and Arc Flash Hazard Analysis Report in accordance with NFPA 70E based upon design information. A final report shall be required during construction based upon actual utility and field-installed equipment.
- I. The Consultant shall be responsible for researching and obtaining as-built or other data for their design.

III. PLAN DELIVERABLES

- A. The Consultant shall provide deliverables in accordance with the following:
 - 1. Plans shall be prepared and submitted to DOTD. Additional PDF and hard copies of plans shall also be delivered as required by the DOTD Project Manager. Coordination with the DOTD Project Manager is also required regarding any additional requirements for non-electronic plan delivery.
 - 2. The Consultant shall provide review and comment of the 95% final Plan Constructability/Biddability Review Form prior to the form being signed by the Project Engineer.
 - 3. QC/QA documentations required by Bridge Design & Evaluation Manual (BDEM) Part I Chapter 3 shall be submitted at each plan submittal.
 - 4. FAA evaluation shall be performed and documentation submitted to the FAA as required.
 - 5. A construction cost estimate, with pay item breakdown, shall be included with the Part III.B.1.b deliverable and a revised cost estimate shall be included with each subsequent final plan deliverable.
 - 6. Prior to transmitting the Part III.B.1.b deliverable, the Consultant shall submit a roadway illumination analysis to DOTD for review that includes analysis of all roadways and/or interchanges within the project limits and shall conform to illumination criteria specified under Part II.A. Subsequent resubmittals of the report for review by DOTD shall be transmitted until DOTD takes no exceptions. Final preference of design shall be determined during design development. The report shall be prepared and include the following:
 - a. Full size (22" x 34") PDF and contain multiple sheets as needed for legibility and clarity
 - b. A legible point-by-point illuminance-grid (i.e. iso-footcandle) plot of roadway surfaces within the limits of the project. Calculated average foot-candle data

points shall be on a maximum 10' x 10' centers, each shown to 0.0 decimal points

- c. Stationing (matching plan drawings)
 - d. North arrow
 - e. Scale bar
 - f. Travel lanes and shoulders
 - Note: Travel lanes shall include highway name/route number and vehicular directional arrows
 - g. Adjacent structures, drainage, driveways, parking spaces, buildings, driveway entrances, sidewalks, vegetation
 - h. Light pole and luminaire locations
 - i. Calculated statistical data for:
 - i. Average foot-candles
 - ii. Average-to-minimum ratio
 - iii. Maximum-to-minimum ratio
 - iv. Veiling luminance
 - j. Pole, luminaire and lamp information such as:
 - i. Description
 - ii. Initial lumens
 - iii. Type
 - iv. Luminaire .ies file name
 - v. Luminaire mounting height
 - vi. Arm length
 - vii. Catalog cutsheet
 - viii. Luminaire iso-illuminance contours
 - k. Light Loss Factor (LLF)
 - l. Information specified under Part III.A.7.e.
 - Note: Additional report information may be requested by DOTD.
7. Beginning with the Part III.B.2 deliverable, the following electrical calculations are required. Update as required.
- a. Voltage Drop for Service Points, Branch Circuits, etc.
 - b. Fault Current for Service Points
 - c. Conduit Fill for all circuits
 - d. Short Circuit and Arc Flash Hazard Analysis Report

- Note: Provide respective formulas, constants, values, and parameters used for all calculations.
- e. Include the following general information with all calculations:
- i. Calculation Title
 - ii. Table of Contents
 - iii. Design Engineer Name, P.E. Number, and Company Name
 - iv. DOTD Project Name and Number
 - v. Project Name and Number
 - vi. Date
 - vii. Louisiana Professional Engineering and Land Surveying Board (LAPELS) "Pocket Card" indicating current status of license in Louisiana
- Note: Additional "general information" may be requested by DOTD.
8. TSP for Construction Proposal (to be submitted separate from Plan Set Sheets and Documents Package) shall be included at the Part III.B.1.b deliverable and a revised TSP shall be included with each subsequent final plan deliverable. TSP shall to include, as a minimum, the following:
- a. Lighting and electrical specifications
 - b. Lighting and electrical equipment description list
- B. The Consultant shall deliver plans to the DOTD Project Manager for review at each of the following increments. Deliverables that do not comply with a milestone description cannot qualify for any subsequent milestone.
1. Design Development (60% Final Plans):
 - a. Illumination Analysis Report. See Part III.A.6.
 - b. This submittal shall be a complete representation of what shall be submitted later as Final Plans. Every sheet of the anticipated Final Plans shall be represented in this submittal. The overall project development shall be 60%; however, some sheets may be completed while the bulk shall be nearly completed and a few sheets may be noticeably less than 60% complete. However, no sheets shall be void of relevant project data or blank.
 2. Advance Check Prints (95% Final Plans):

This submittal shall meet all the requirements of the Part III.B.1 submittal. The overall project development shall be at least 95% complete. All sheets shall be essentially 100% complete but may lack minor details. No sheet shall lack any relevant information needed by those reviewing the plans at this deliverable stage. The final placement of some equipment may not be known until ACP comments have been received from the field.

3. Final Plans (98% Final Plans):

This submittal shall meet all the requirements of the Part III.B.2 submittal and shall address all comments from the Part III.B.3 submittal. All sheets shall be 100% complete. The Consultant's Final Plans, Construction Estimate, and Summary of Estimated Quantities shall be submitted and then transmitted by the DOTD Project Manager to the DOTD Contracts & Specifications Section for review.

4. Consultant's Project Delivery (100% Final Plans):

This submittal shall meet all the requirements of the Part III.B.3 submittal and shall address any comments from the DOTD Contracts & Specifications section and deliver the Final Plans, specifications, and Construction Estimate.

C. The Consultant shall answer all pre-bid RFI's in Falcon from bidders and provide official response and/or plan revisions as needed to the DOTD.

D. The Consultant shall perform a bid review analysis and provide official response to DOTD.

TABLE 1: Electrical Design Services

1. X = Required attendance. O = Optional attendance.
2. Attendees marked with X or O shall be notified and invited to the meeting.
3. The Consultant is not responsible for no-shows of attendees outside their organization.
4. Minimum notification time as per State/Entity Lighting Agreement.

Attendees³	Pre-Construction Meeting¹⁻²	Site Inspections¹⁻²	Pre-Final and Final Inspection¹⁻²
Consultant	X	X	X
DOTD Project Manager	X	O	O
DOTD District Project Engineer	X	X	X
DOTD District Area Engineer	O	O	O
DOTD District Construction Coordinator	O	O	O
DOTD District Traffic	X	O	O
DOTD District Utilities	X	O	O
DOTD District Real Estate	X	O	O
DOTD Environmental	X	O	O
Utility Companies	X	O	O
DOTD Statewide Electrical Inspector	X	O	X
Parish/Local Government Entity	O	O	X ⁴

TASK 5: CONSTRUCTION RELATED ENGINEERING SERVICES

The Consultant shall provide Construction Related Engineering Services (Electrical) as defined below:

WORK ELEMENTS:

I. PROJECT MANAGEMENT

A. Meetings / Site Inspections:

The Consultant shall attend meetings stated in Table 2 as a minimum. The Consultant shall also attend meetings requested by the DOTD Project Manager when needed for a specific issue during construction phase. The Consultant shall prepare the minutes of all meetings for review by the attendees. The Consultant shall initiate advanced discussions with Project Engineer to assure best in class project performance.

B. Written Plan / Monthly Reports:

A written plan describing the work being performed and a timeline to perform the work shall be provided by the Consultant during construction phase. Monthly report shall consist of more details than man-hour invoice giving a verbal assessment of progress and prompt notification of any problems that may require the DOTD Project Manager's attention.

C. Project Responsibility and Ownership:

The Consultant shall be proactive as well as reactive during all phases of a project, including tracking/monitoring of progress and coordination/communication with the DOTD, Parish/Local Government, and utility companies, for avoidance or resolution of issues. Coordination also includes identification of and interaction with all other ongoing projects (feasibility through construction) that interface or interfere with this project.

D. Final Calculations Performed during Construction:

The Consultant shall obtain actual utility and field-installed equipment information from the contractor. The Consultant shall perform a short circuit and Arc Flash Hazard Analysis per NFPA 70E on the electrical system based upon actual utility and field-installed equipment to determine and calculate available incident arc energy and design appropriate warning labels for equipment. This analysis will be performed after the actual equipment has been installed and field verified and the necessary field data is collected for use in the analysis and calculations. This report will be based on the preliminary report completed during design and shall be considered final upon completion of the analysis. The Consultant shall collect or confirm the following information for the Arc Flash calculations upon completion of the project:

- Available Utility Fault Current (Max, Min, Normal)
- Utility Transformer KVA, Voltage, % Impedance, and X/R ratio
- Installed Circuit Breaker Trip Curves
- Installed Equipment Specifications
- Length of Installed Conductors

The Consultant shall provide the contractor with the detailed information required to be printed upon the Arc Flash label. The Consultant shall review sample Arc Flash Hazard label cutsheets submitted by the Contractor. Upon acceptance, the Contractor shall be responsible for printing and installing Arc Flash Hazard Warning labels for each applicable

piece of equipment in accordance with UL 969, ANSI Z535.4, NEC 110.16, and NFPA 70E 130.3 guidelines.

II. ENGINEERING SUPPORT & MONITORING OF CONSTRUCTION ACTIVITIES (CONSTRUCTION RELATED ENGINEERING SERVICES)

The Consultant shall provide engineering support and monitoring of construction activities described as follows:

A. Pre-Construction Conference:

The Consultant shall attend the Pre-Construction meeting to represent DOTD Electrical Design in setting the procedures and discussing any concerns about the construction with the contractor. Other issues such as document distribution and shop drawing submittals shall be reviewed. Attendance by the Design Engineer is mandatory. The Consultant shall issue the documented proceedings to the DOTD.

B. Shop Drawings and Equipment Submittals:

The Consultant shall review and accept shop drawings and equipment submittals. This includes distribution of the submittals to the appropriate parties as agreed in the Pre-Construction meeting. A log shall be maintained with the status of the submittals as well as a complete set of submittals. The Consultant shall promptly notify the DOTD Project Engineer of Contractor's submittal issues that need resolution and/or which may delay the submittal process beyond the Assembly Period.

C. Operation and Maintenance Manuals:

The Consultant shall review and accept Operation and Maintenance Manuals to verify they are complete, include accurate data and prepared in accordance with §822.06.6 of the LSSRB. The final accepted manuals shall be distributed in accordance with the procedures outlined in the Pre-Construction meeting. In addition to data specified within §822.06.6 of the LSSRB, other pertinent information to be included and be minimum points for verification are as follows:

1. State/Entity Lighting Agreement[▲]
2. Roadway Lighting Operational Plan[▲]
3. Final Acceptance Letter[▲]
4. Light Pole Certifications
5. Luminaire Installation & Maintenance
6. Test Reports

[▲] DOTD to provide to the Consultant for insertion into manual.

D. As-Built Plans:

The Consultant shall track the progress of the As-Built Plans during construction. The Design Engineer shall review the As-Built Plans to determine if they are complete and accurate. A final copy shall be included by the Contractor in the

Operation and Maintenance Manuals.

E. Request for information (RFI's):

The Consultant shall process all RFI's using the DOTD Construction Division's standard RFI form for the project and maintain a log of the RFI's with the status of the responses.

F. Field Inspections:

During construction, periodic field inspections shall be made by the Consultant to track work progress and verify proper equipment installation. It is the Consultant's responsibility to plan and coordinate the timing of each inspection for effectiveness and to meet the need of the DOTD Project Engineer. Attendance by the Design Engineer is mandatory. Exceptions require written preapproval from DOTD Electrical Design. Field inspections must be coordinated with the DOTD Project Engineer and Statewide Electrical Inspector. Written inspection reports shall be prepared and delivered to DOTD. This task order shall be based on four (4) field inspections, not counting Final Inspections (consisting of Pre-final and Final). Requirements for field inspectors include the following:

1. Must have taken an up to date NEC course
2. A minimum of five (5) years of experience in electrical inspection and reporting

The Consultant inspection services are intended to provide only an audit sample of the construction effort (as opposed to a comprehensive responsibility for reviewing all construction elements):

1. Observe Layout (location stakes) of Low Mast Pole / Pole Foundations
2. Review / Observe Trenching and Boring (for conduit installation)
3. Review / Audit Installation of Low Mast Pole / Pole Foundations
4. Observe required Testing Associated with Lighting System as specified under §822.09 of the LSSRB. A minimum of two (2) as follows:
 - a. Conductor insulation test
 - b. System performance test

G. Pre-Final and Final Inspection

The Consultant shall make both a pre-final and a final inspection to verify the completion of the work based on the plans and specifications. Attendance by the Design Engineer is mandatory. The Consultant shall coordinate the pre-final and final inspection with all parties. A final inspection report shall be submitted to the DOTD along with a punch list of incomplete items. The task order is complete upon final acceptance of the project or acceptance of O&M Manuals by both the Consultant and the DOTD Electrical Design, whichever occurs later.

TABLE 2: Construction Related Engineering Services

1. X = Required attendance. O = Optional attendance.
2. Attendees marked with X or O shall be notified and invited to the meeting.
3. The Consultant is not responsible for no-shows of attendees outside their organization.
4. Minimum notification time as per State/Entity Lighting Agreement.

Attendees³	Pre-Construction Meeting¹⁻²	Site Inspections¹⁻²	Pre-Final and Final Inspection¹⁻²
Consultant	X	X	X
DOTD Project Manager	X	O	O
DOTD District Project Engineer	X	X	X
DOTD District Area Engineer	O	O	O
DOTD District Construction Coordinator	O	O	O
DOTD District Traffic	X	O	O
DOTD District Utilities	X	O	O
DOTD District Real Estate	X	O	O
DOTD Environmental	X	O	O
Utility Companies	X	O	O
DOTD Statewide Electrical Inspector	X	O	X
Parish/Local Government Entity	O	O	X ⁴

TASK 6: ADDITIONAL SERVICES

The Consultant to inspect the existing DOTD signal fiber for the project to determine the usability of the existing system for the advanced controller system relative to communications. This work will be authorized as a supplemental agreement

Services for construction support in other disciplines may be authorized by issuing supplemental agreements.

ELECTRONIC DELIVERABLES

The Consultant hereby agrees to produce electronic deliverables in conformance with DOTD Software and Deliverable Standards for Electronic Plans document in effect as of the effective date of the most recent contract action or modification, unless exempted in writing by the Project Manager. The Consultant is also responsible for ensuring that sub-consultants submit their electronic deliverables in conformance with the same standards. DOTD Software and Deliverable Standards for Electronic Plans document and DOTD CAD Standards Downloads are available via links on the DOTD web site.

The Consultant shall apply patches to CAD Standard Resources and install incremental updates of software as needed or required. The Consultant hereby agrees to install major updates to software versions and CAD Standard Resources in a timely manner. Major updates of CAD standards and

software versions shall be applied per directive or approval of the DOTD Design Automation Manager. Such updates will not have a significant impact on the plan development time or project delivery date, nor will they require the Consultant to purchase additional software. Prior to proceeding with plan development, the Consultant shall contact the Project Manager for any special instructions regarding project-specific requirements.

In the event that any Digital Plan Delivery Standard conflicts with written documentation, including DOTD plan-development Manuals, the Digital Plan Delivery Standard governs. The Consultant is responsible for contacting the Project Manager should questions arise.

The Consultant shall upload (or check in) electronic deliverables directly into the DOTD ProjectWise repository at each plan delivery milestone. The Consultants are responsible for performing certain operations at each milestone including, but not limited to, the following:

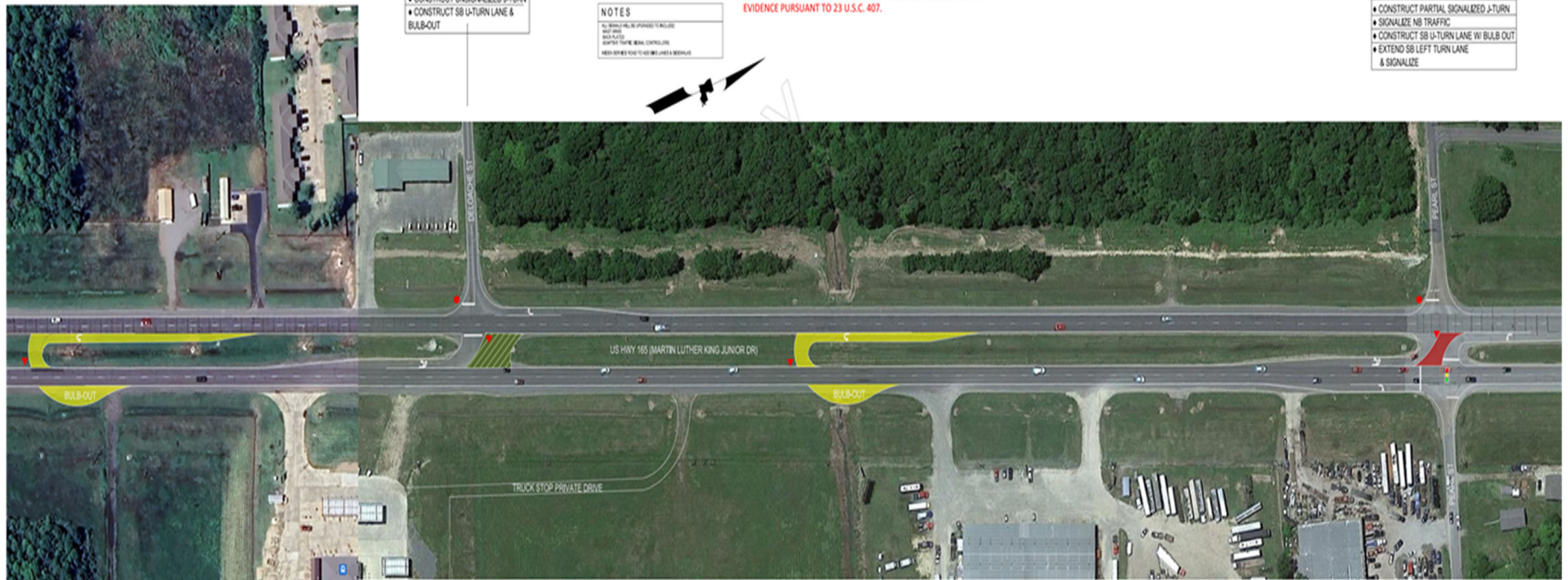
- Upload (or check in) CAD plan deliverables to the discipline “Plans” folder
- Apply and maintain indexing attributes to CAD plans (and other deliverables as needed)
- Publish PDF format plan submittals in ProjectWise using automated publishing tools
- Digitally sign PDF format plan submittals in ProjectWise according to DOTD standards and procedures (Final Plans, Revisions and Change Orders). Signatures shall be applied in signature blocks provided with electronic seals and Title Sheets.

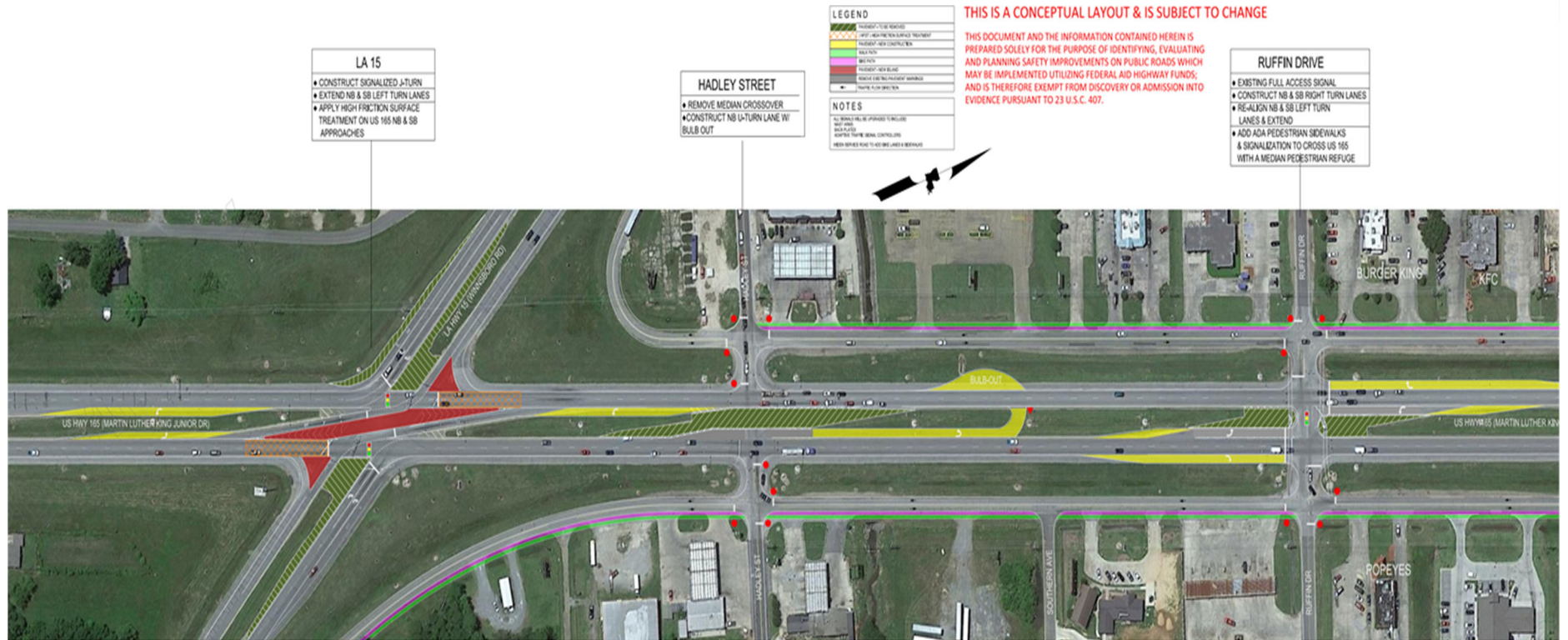
Additionally, after reviewing deliverables for each submittal milestone, the Project Manager shall notify the Consultant regarding the availability of two automatically-generated informational reports in ProjectWise. These reports document the completion status and other information regarding indexing attributes and CAD standards. The Consultant shall take these reports into account and make any necessary adjustments to plans before the next submittal milestone; or sooner, if directed by the Project Manager.

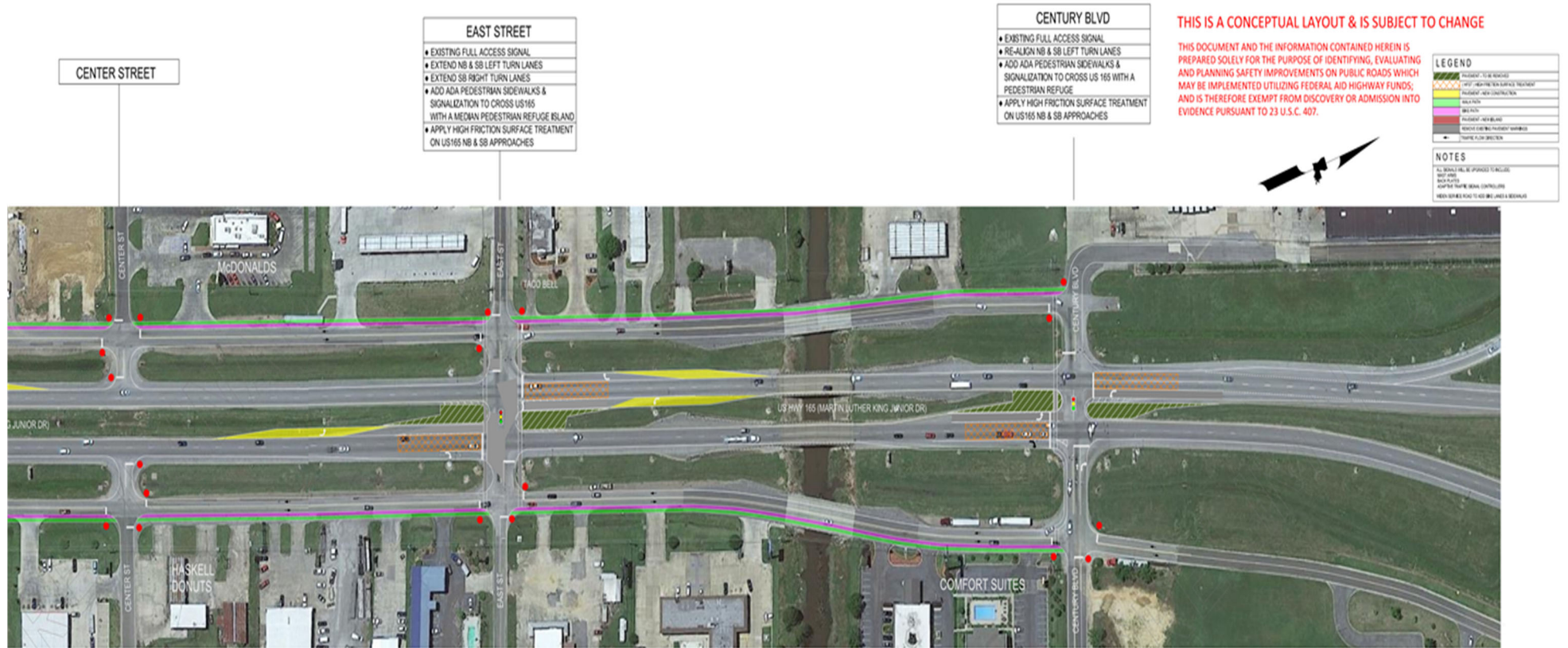
THIS DOCUMENT AND THE INFORMATION CONTAINED HEREIN IS PREPARED SOLELY FOR THE PURPOSE OF IDENTIFYING, EVALUATING AND PLANNING SAFETY IMPROVEMENTS ON PUBLIC ROADS WHICH MAY BE IMPLEMENTED UTILIZING FEDERAL AID HIGHWAY FUNDS; AND IS THEREFORE EXEMPT FROM DISCOVERY OR ADMISSION INTO EVIDENCE PURSUANT TO 23 U.S.C. 407.

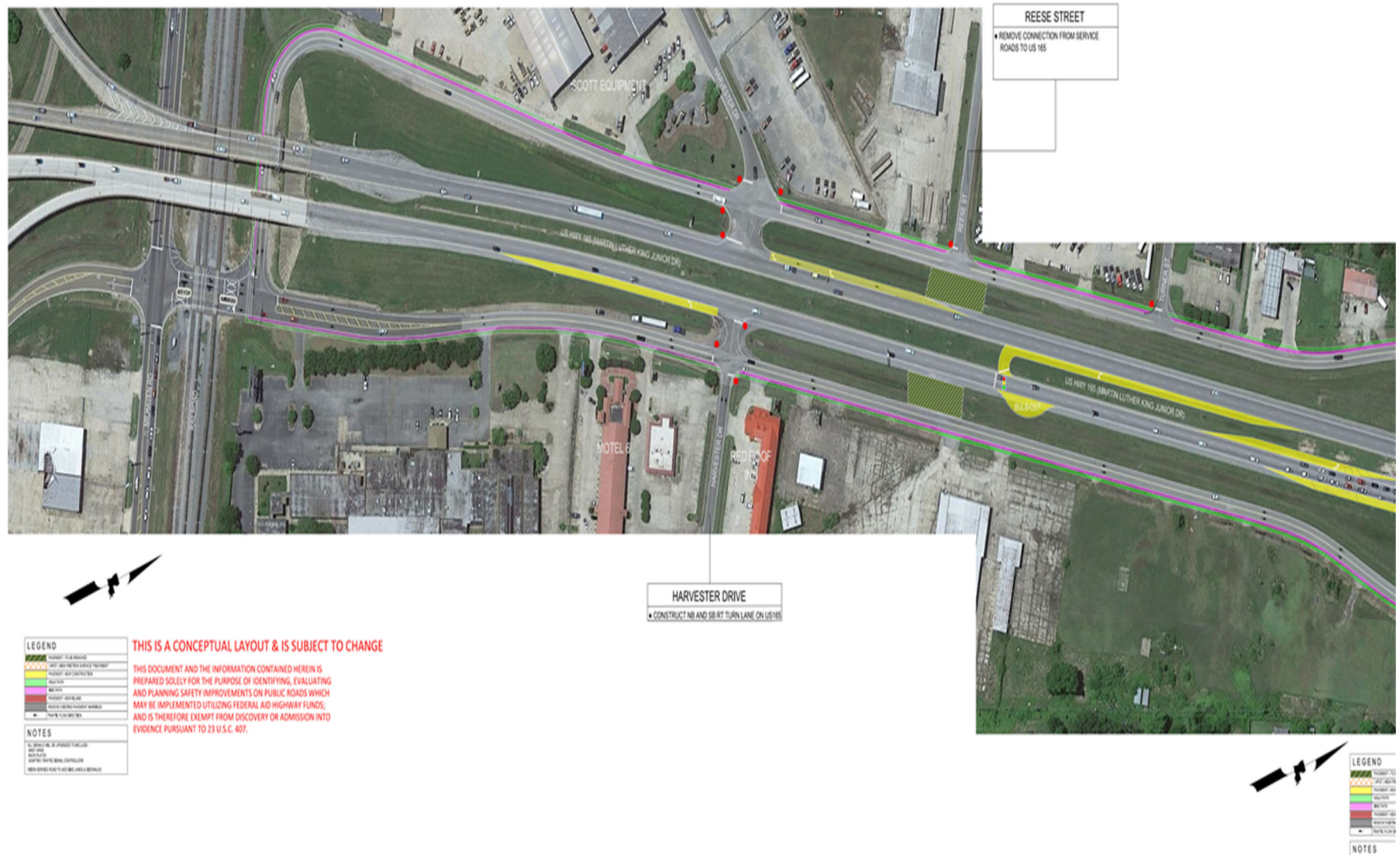
DELOACHE STREET
<ul style="list-style-type: none"> • CONSTRUCT UNSIGNALIZED J-TURN • CONSTRUCT SB U-TURN LANE & BULB-OUT

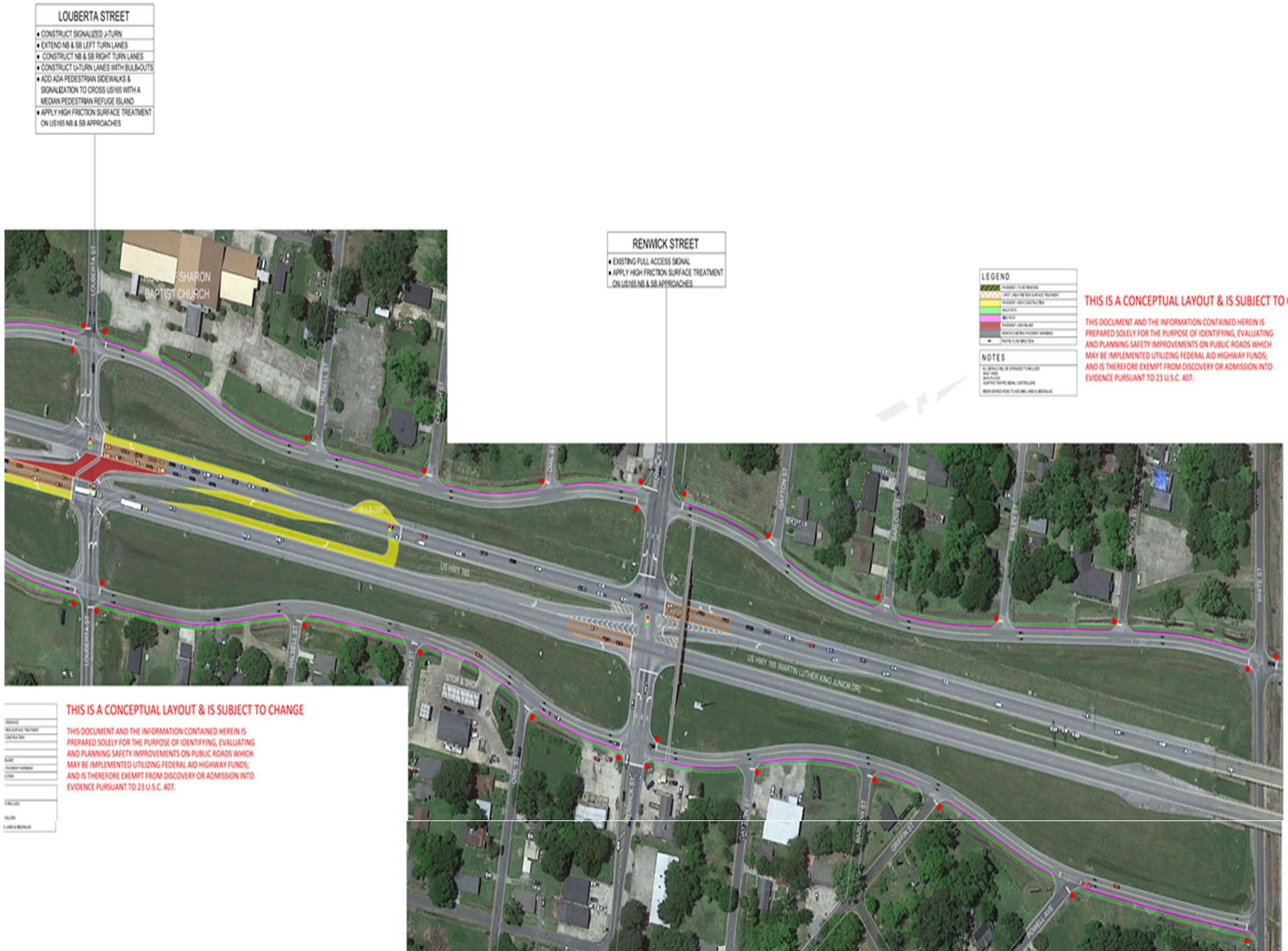
PEARL STREET
• CONSTRUCT PARTIAL SIGNALIZED J-TURN
• SIGNALIZE NB TRAFFIC
• CONSTRUCT SB U-TURN LANE VII BULB OUT
• EXTEND SB LEFT TURN LANE & SIGNALIZE



















LEGEND	
	PAVEMENT - TO BE REMOVED
	(HFST) HIGH FRICTION SURFACE TREATMENT
	PAVEMENT - NEW CONSTRUCTION
	WALK PATH
	BIKE PATH
	PAVEMENT - NEW ISLAND
	REMOVE EXISTING PAVEMENT MARKINGS
	TRAFFIC FLOW DIRECTION

NOTES	
<p>ALL SIGNALS WILL BE UPGRADED TO INCLUDE: MAST ARMS BACK PLATES ADAPTIVE TRAFFIC SIGNAL CONTROLLERS</p> <p>WIDEN SERVICE ROAD TO ADD BIKE LANES & SIDEWALKS</p>	

ATTACHMENT B – MINIMUM PERSONNEL REQUIREMENTS (MPRs)

The following requirements must be met at the time the proposal is submitted:

1. At least one (1) principal of the prime consultant shall be a registered professional engineer in the State of Louisiana.
2. At least one (1) principal or other responsible member of the prime consultant shall be currently registered in the State of Louisiana as a professional engineer in civil engineering.
3. At least one (1) principal or responsible member of the prime consultant shall be a professional civil engineer, registered in the State of Louisiana, and shall have a minimum of five (5) years of experience in responsible charge of the preparation of roadway plans.
4. At least one (1) professional civil engineer, registered in the State of Louisiana, shall have a minimum of five (5) years of experience in traffic signal design.
5. At least one (1) professional engineer, registered in the State of Louisiana, shall have a minimum of five (5) years of experience in ITS systems engineering.
6. At least one (1) professional electrical engineer, registered in the State of Louisiana, shall have a minimum of five (5) years of experience in electrical and roadway lighting design.
7. At least one (1) professional engineer, registered in the State of Louisiana, shall have a minimum of five (5) years of experience in the design of structural components of light poles (steel and aluminum), and light pole foundations in accordance with AASHTO Standard Specifications for Structural Supports for Highway Signs, Luminaires, and Traffic Signals.

MPRS ARE TO BE MET BY SEPARATE INDIVIDUALS OF THE PRIME CONSULTANT, UNLESS STATED OTHERWISE BELOW.

MPR Nos. 1 through 3 may be met by the same person.

MPR Nos. 4 and 5 may be met by the same person.

MPR Nos. 4 through 7 may be satisfied through the use of a sub-consultant(s).

NOTE: WHEN SATISFYING A MINIMUM PERSONNEL REQUIREMENT, PLEASE ENSURE THE RÉSUMÉ REFLECTS REQUIRED EXPERIENCE AS REQUESTED.

- Please note the number of MPRs are minimal; however, all relevant personnel necessary to perform the Scope of Services must be identified in Section 14 of the DOTD Form 24-102 and their resumes included in Section 16 of the DOTD Form 24-102.